

From: Paul McIntosh pmcintosh64@yahoo.com
Subject: Fw: Environmental Policy Update - December 2024
Date: 6 December 2024 at 1:48 PM
To: MDCA Secretary secretary@ourmapua.org



Fiona- please add to correspondence.

Note there is a link included in the update for a podcast by Anna McKenzie on the Mapua Masterplan.

Thx
Paul

[Yahoo Mail: Search, organise, conquer](#)

----- Forwarded message -----
From: "Environment Plan Team" <environmentplan@tasman.govt.nz>
To: "Paul McIntosh" <pmcintosh64@yahoo.com>
Cc:
Sent: Fri, 6 Dec 2024 at 11:46 am
Subject: Environmental Policy Update - December 2024

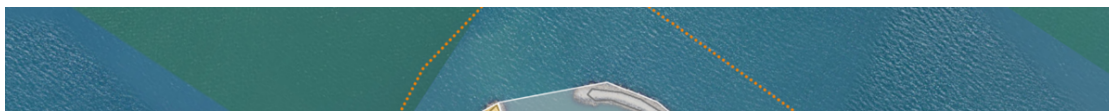


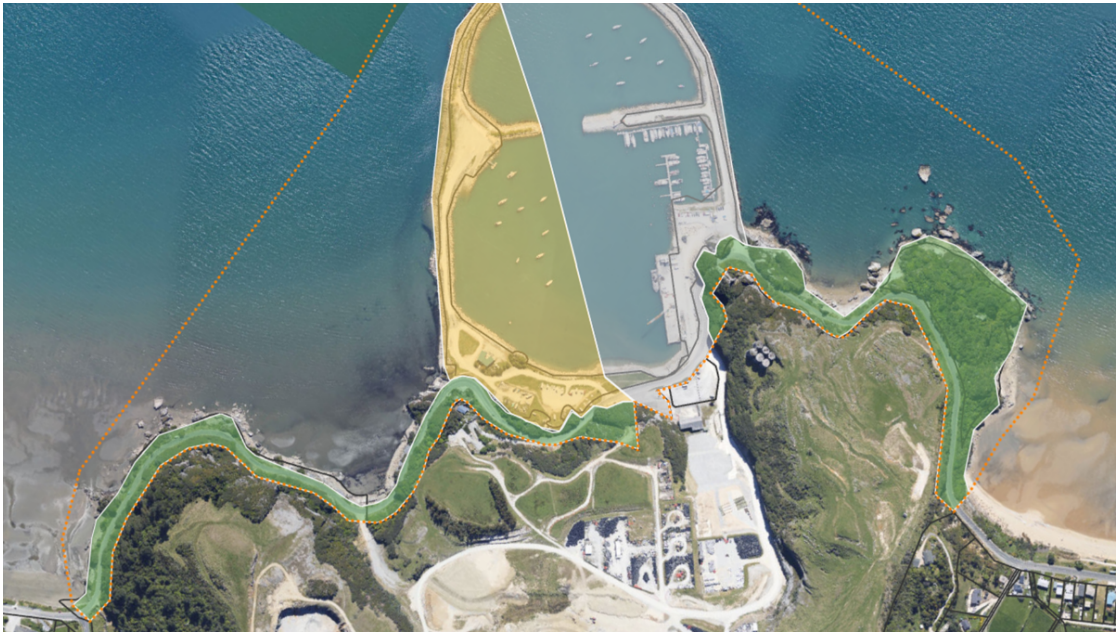
Environmental Policy Newsletter.

Kia ora Paul

What's in this edition: Port Tarakohe Draft Spatial Plan - meet the planners. Updates for Fresh Water Management and Farm Plans. Mapua Draft Master Plan podcast. The Need to Know about Avian Bird Flu.

Port Tarakohe Draft Spatial Plan Feedback Opens





- **Marked in grey:** Commercial Port area = wharves, amenities, marina, appropriate expansion
- **Marked in yellow:** Recreation area = boat club, community recreation, launching, parking, amenity, penguins, open spaces, supporting activities such as hospitality
- **Marked in green:** Conservation area = revegetation, climbing, national park

The Port Taranaki draft Spatial Plan addresses how the interests of commercial, recreation users and special/environmental values will be managed and served in the future.

The Port is a highly valued community asset that provides for recreational and commercial activities

Port Taranaki is home to Manawhenua ki Mohua (whānau ki Ngāti Tama, Te Ātiawa and Ngāti Rārua); the kaitiaki (guardians) of this rohe (area) and all its taonga (treasures).

The release of the Port Taranaki Draft Spatial Plan for public feedback marks the next stage for this project.

Previous community engagement has created wide interest and feedback from the public, landowners, iwi, recreation, industry and environmental advocates who have an ongoing interest in the creation of a balanced, sustainable, and thriving Port Taranaki.

Read the plan and give us your feedback here at <https://shape.tasman.govt.nz/port-tarakohe-spatial-plan>

Join the conversation and meet the planners:

Tuesday 10 December (11 - 2pm) at Pōhara Boat Club

Meet the planners and give us your feedback in person.

No appointments are necessary. Any questions email us at environmentplan@tasman.govt.nz

Feedback on Shape Tasman to the Port Tarakohe Draft Spatial is open now through to Monday 10 February 2025.

Draft Māpua Masterplan Podcast



Submissions are now open for formal comments on the draft Māpua

Masterplan and Supporting Document. Principal Planner Anna McKenzie [talks about the draft plan](#) its proposed zoning changes, future infrastructure upgrades, planned recreational linkages and open spaces and what we can expect to see in 2050. More details on [Shape Tasman w](#) with submissions closing 5pm on Sunday 16 February 2025.

Fresh Water Management Plan Update



Council’s Strategy and Policy Committee has approved continuing to develop the “draft Land and Freshwater Plan Change (LFPC)” to amend water and discharge rules in the Tasman Resource Management plan. This decision aims to support priority freshwater issues in Tasman while aligning with the latest directives from central government.

Council has decided to progress drafting the LFPC, reflecting input so far from the community, iwi, and stakeholders.

This approach provides time to incorporate anticipated amendments to the National Policy Statement for Freshwater Management (NPS-FM) in 2025.

Continuing with the freshwater plan change enables Council to respond to emerging legislative changes and ensuring that the Plan Change fully integrates national standards. It also supports the role of farm plans that continue to be used by farmers to show how farming practices address risk and

continue to be used by farmers to show how farming practices address risk and fine tune their land management practices.

The decision aligns with the Council's commitment to advancing environmental protection efforts, particularly for the Water Conservation Order (WCO) in place for Te Waikoropupū Springs and the Wharepapa Arthur Marble Aquifer.

In early 2025, the Council will reassess the LFPC process based on the latest national policy updates. This review will help determine the most efficient path forward for public release and notification of the plan change. In the meantime, the Council staff will continue refining the LFPC and will provide regular updates on progress and ongoing workstreams to support the WCO and other key water initiatives.

This decision is a key step in safeguarding the region's vital water resources, it addresses Council's priority of maintaining water quality while aligning with new national policy updates to help ensure a sustainable, resilient future for the region's waterways and the businesses and communities that rely on them.

[Read more here](#)

Freshwater Farm Plan pause – what it means for Tasman



Central Government is currently reviewing the Freshwater Farm Plan (FWFP) regulations. These regulations do not yet apply in the Tasman District and the future timing of when they apply will be determined by the review process.

The announcement made by Central Government on 3 September, that the legislated rollout of FWFP will be paused, relates to the regions where the regulations already apply (Waikato, Southland, West Coast, Otago and Horizons).

This formal pause, for those currently subject to the regulations, provides some certainty around existing timeframes for farmers within those regions while the review is underway. [Read more here](#)

The Need to know about Avian Bird Flu.



Update on Avian Bird Flu Threat to New Zealand

The risk of Highly Pathogenic Avian Influenza (HPAI strain H5N1), commonly known as bird flu, reaching New Zealand remains low. However, the Ministry for Primary Industries (MPI) is closely monitoring the situation internationally and has implemented measures to prepare for a potential outbreak.

Preparations to Date:

- **Surveillance:** MPI has established a robust surveillance program to detect any signs of the virus in both domestic and wild birds.
- **Biosecurity Measures:** Strict biosecurity protocols are in place at the border to prevent the introduction of the virus.
- **Contingency Planning:** MPI has developed comprehensive response plans to manage an outbreak, including measures to contain the spread and minimize the impact on the poultry industry.
- **Public Awareness:** Information campaigns are underway to educate the public about the disease and the importance of reporting sick or dead birds.

Advice for Tasman Residents:

- **Report Sick or Dead Birds:** If you find three or more sick or dead wild birds in a group, report it immediately to Biosecurity New Zealand's Exotic Pest and Disease Hotline on 0800 80 99 66.
- **Practice Good Hygiene:** Wash your hands thoroughly with soap and water after handling birds or bird-related materials.
- **Avoid Contact with Sick or Dead Birds:** Do not touch or handle sick or dead birds.
- **Keep Poultry Flocks Healthy:** Maintain good biosecurity practices on your property to protect your poultry from disease.

[Read more here](#)

In the Media



[Tasman not following Nelson on intensified housing | Nelson App](#)

Tasman's Plan would rezone areas of many Tasman settlements to ensure the district has the residential and business capacity for the next decade. Housing intensification specifically is slated to be largely focused on the State Highway 6 corridor, in Wakefield, Brightwater, and Richmond.

[TDC Freshwater Plan | Golden Bay Weekly](#)

Tasman District Council (TDC) is pushing ahead with the development of new rules around fresh water.

Tell a Friend

If you know someone who would be interested in being kept up-to-date on the work of the Environmental Policy Team, and on future opportunities for providing feedback, please let them know that they can subscribe to these newsletters by using this link: <http://eepurl.com/hk4tOv>

Copyright © 2024 Tasman District Council, All rights reserved.
You are receiving this email because you opted in via our website.

Our mailing address is:

Tasman District Council
189 Queen Street
Richmond, Tasman 7020
New Zealand

[Add us to your address book](#)

Want to change how you receive these emails?
You can [update your preferences](#) or [unsubscribe from this list](#).

