

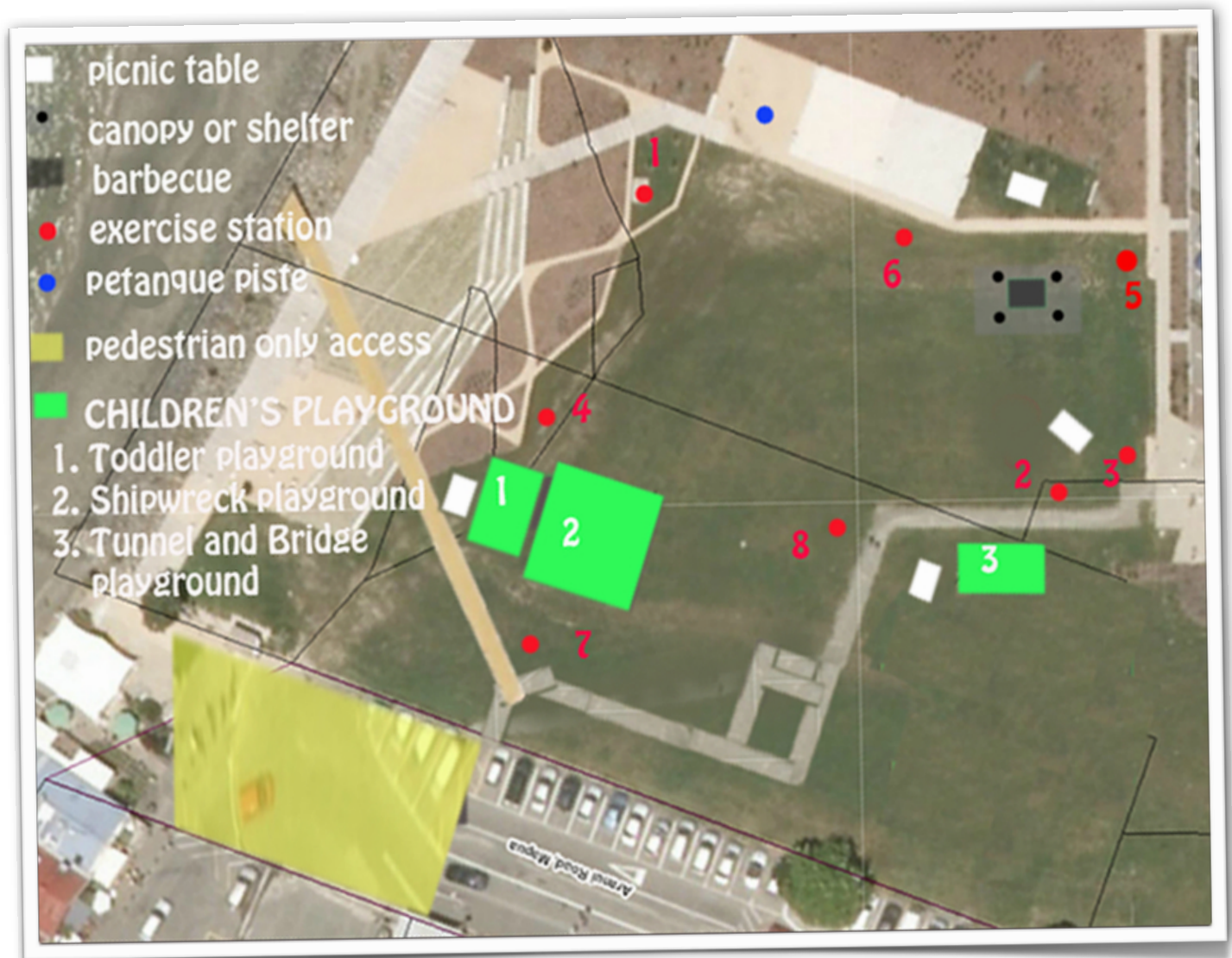
Mapua Waterfront Park

Community Upgrade Proposal



Mapua & District Community Association
June 2015

Proposal Plan



Mapua Park is seen by the Community Association and others as an underused asset. Although redeveloped in a landscaping and parkland TDC project following the clean-up, the community and general public have been slow to occupy this facility. The community is now responding to this situation by developing a proposal to bring a family and health focus back to the park. Exercise stations, a petanque piste, children's play areas, picnic tables and a free barbecue form the basis of a new proposal to enable the public to own the zone and develop some useful free facilities for a broad community in an environment of increasingly focused commercial development across at the Wharf.

The **Community Upgrade Group** is a sub-committee of the Community Association and includes others from within the community. The Waterfront Park is owned by the Tasman District Council and the Group also includes TDC Parks and Reserves staff. The Group reports to the Community Association at their monthly public meetings, as well as the Mapua Waterfront Advisory Forum. The Forum is a group convened by the TDC which includes neighbours, community, business and council representatives. The Forum has been involved primarily with stakeholder roles and consultation in the further development of Mapua Wharf attractions and its management. The Community Upgrade Group has members from these three stakeholder groups and also includes individuals in the wider community with special interests in fitness and health, family recreation and children's play and safety.

Progress so far has been surprisingly swift as a community consensus on what is required has been evolving well. The Community Association has asked for ideas and suggestions for this on several occasions and the overwhelming requests have been for children's play areas, picnic and barbecue facilities and more events and community activities at the Waterfront Park.

Early meetings of the Group decided that the initial focus should be on development of attractive infrastructure and facilities, allowing more activities and initiatives to have a community context.

The Group next set about a community research project to further develop a proposal. From within the adult community a need for a fitness circuit was recognized, and a well developed proposal was quickly endorsed. Other members looked at design strategies and children's play areas. Extensive consultation with school and preschool children developed some inspiring suggestions which form the basis of the play area proposal. Design feedback was to keep to formal and informal themes. These are the modern designer context of the existing Park as well as the history of the Port and coastal location. Specifically the theme identified is one of a playground based on a shipwreck and marine and fish themes. Furniture design minimal and colourful.

The Proposed Developments include the following elements:

A **Petanque Piste** in one of the bays already established in the Park.

Exercise Stations using a model already tested. A series of low impact structures are used to develop body health. Stretch, balance, jump, lift exercises are available on a circuit around the Park. See the map.

1. Existing sit up bench
2. Walking beams
3. Existing ham-string stretch
4. Tyre lift
5. Uneven low bar
6. Standing jump
7. Pull-up bars
8. Low hurdles

A free **Gas Barbecue** within a shade/shelter structure would encourage family use of the Park.

An array of **Picnic Tables** around the Park would be widely welcomed.

These are to have separated eating and seating surfaces, disability access and appealing design. Some areas for picnicking and children should be clearly visible and safely accessed from the Wharf precinct.

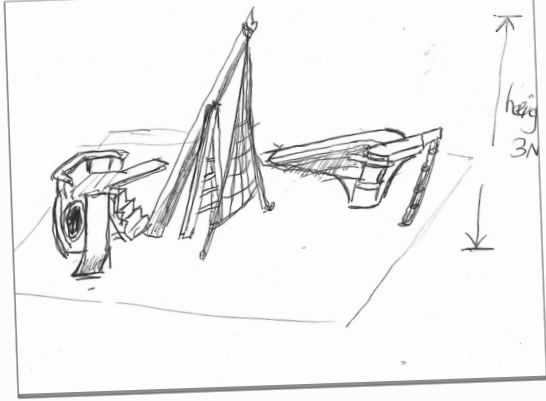
The **Children's Play Areas** are themed on shipwreck/aquatic themes.

Two age groups are identified with separated play zones. The younger zone focusses on stepping stones, low jumps and benches. A combined zone has tunnels, slopes and bridges. A larger boat themed structure was a clear consensus from the older schools group. Swinging, sliding, climbing and jumping activities were identified by this primary aged group. They identified a pirate/shipwreck theme with aquatic/sea-life elements that is fun and colourful and encourages active play. Moving parts and sound making elements also emerged. The Group felt this area should accommodate family seating areas close by, and safe separation from the parking area, toilets and Aranui Road.

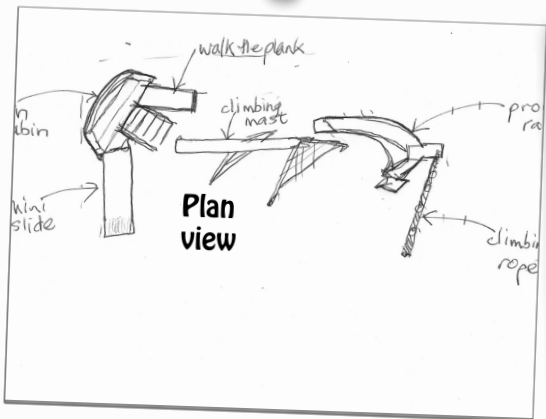
The Waterfront Park history to be **interpreted in an information panel** on the west wall of the pump house. Suggested that this panel covers the iwi story, early developments as part of the Mapua Port, the community story, the clean-up and the new facility.

Facility areas and upgrade structures, toilet access etc need to be **clearly signed**. Identifiers and **naming the Park** needs to be up front and welcoming.

Sketches



An initial idea for the proposed pirate / shipwreck playground



Playground plan view.
Wood and natural feel.
Bark undercourse.
In development with
Playgrounds official

Next stages:

Consultation & Response

Approvals or Review

Fundraising & Sponsors

Staged delivery

Waterfront Park Today



From Barbecue area looking toward Petanque Piste



Seaward Picnic Table site



Children's Play Areas



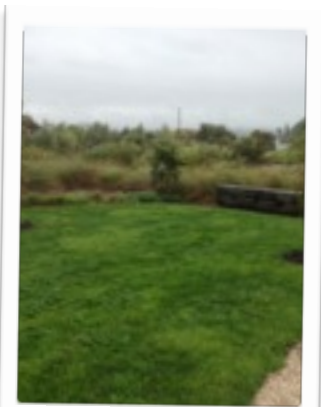
Existing Slope at Play Area



Barbecue area and Carpark from Toilets



Barbecue Area



Top Picnic Area



Bike Racks by the Toilets



View from Toilets toward Petanque Piste